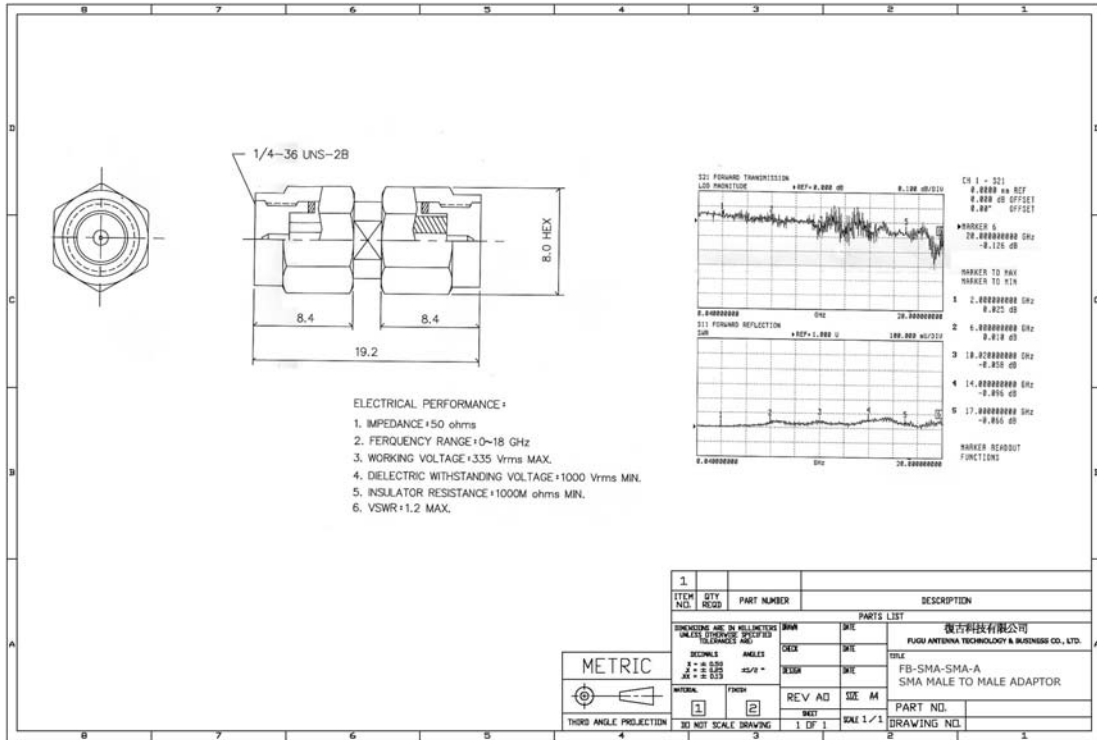


SMA MALE TO SMA MALE ADAPTOR



20 Oct 2010 20:58:02

CH1 S11 LOG 20 dB/REF 0 dB 4:-37.045 dB 10.000 000 000 GHz

*

Cor

↑



CH1 Markers

- 1:-48.751 dB
3.00000 GHz
- 2:-37.188 dB
6.00000 GHz
- 3:-43.084 dB
9.00000 GHz

CH2 S11 SWR 50 m / REF 1 4: 1.0285 10.000 000 000 GHz

Cor

↑



CH2 Markers

- 1: 1.0073
3.00000 GHz
- 2: 1.0280
6.00000 GHz
- 3: 1.0141
9.00000 GHz